

New York Angels

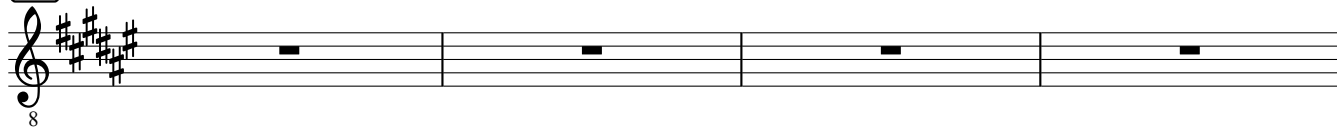
Gilad Hekselman

A

Em7

Bm7

A#7#11

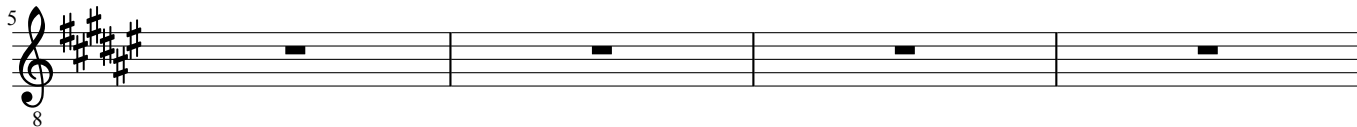


A7sus

A7

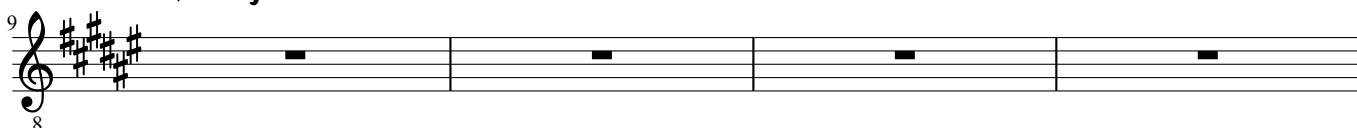
G#m7

C#m7



F#Maj7

EMaj#11



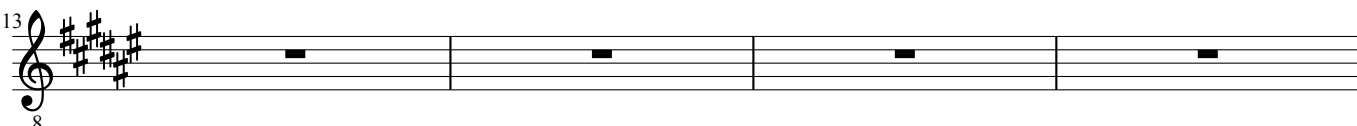
F#Maj7

A#m7

E#7

A#m9

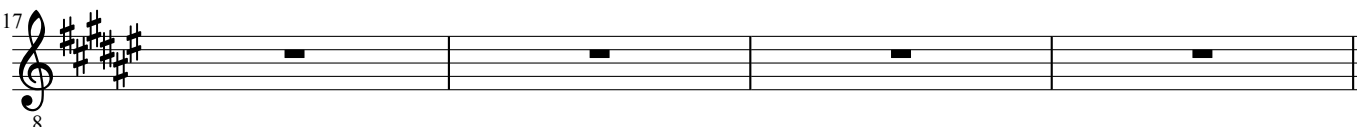
A7



DMaj7

C#7

F#Maj7

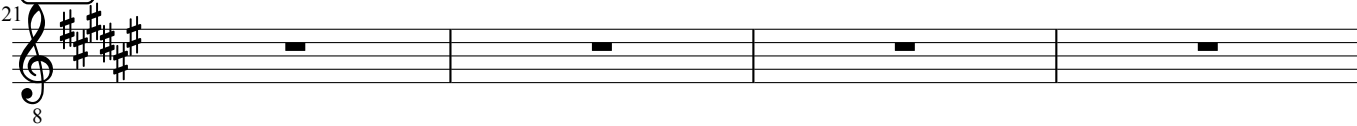


A2

Em7

Bm7

A#7#11

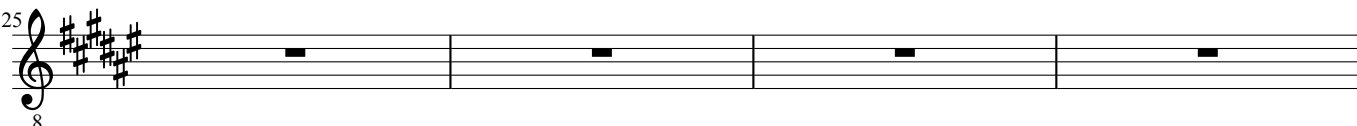


A7sus

A7

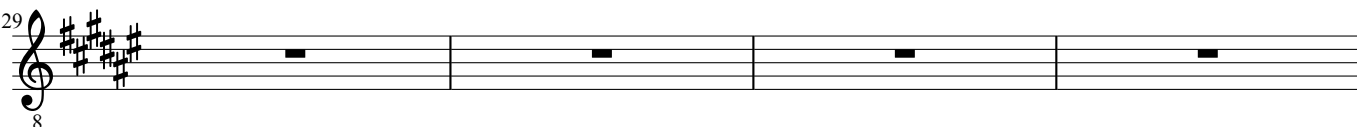
G#m7

C#7



F#Maj7

E7



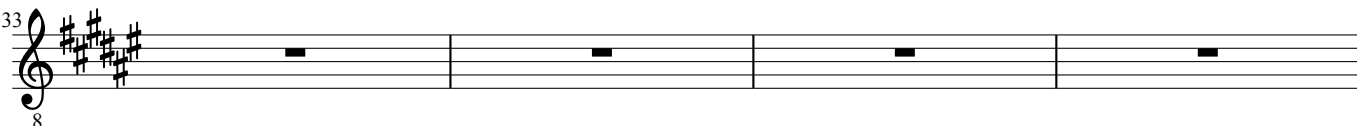
F#Maj7

A#m7

E#7

A#m7

A7



37 **D**Maj7 **C**#7 **F**#Maj7

B

41 **G**Maj7 **C**Maj7

45 **B**7 **E**m7

49 **G**Maj7 **F**Maj7

53 **F**#m7b5 **B**7

57 **E**m7 **B**m7 **A**#7#11

61 **A**7sus **A**7 **G**#m7 **C**#7

C

65 **F**#Maj7 **E**Maj

69 **F**#Maj7 **A**#m7 **E**#7 **A**#m9 **A**7

73 **D**Maj7 **C**#7 **C**m7b5 **B**m7

A#m7

Adim

G#m7b5

G#Maj7

77
8

A musical staff in treble clef with a key signature of three sharps (F#, C#, G#). The staff contains four measures, each with a whole rest. The measure numbers 77, 78, 79, and 80 are indicated by the bar lines.

F#Maj7 B#Maj7 EMaj7 AMaj7 DMaj7

81
8

A musical staff in treble clef with a key signature of three sharps (F#, C#, G#). The staff contains four measures, each with a whole rest. The measure numbers 81, 82, 83, and 84 are indicated by the bar lines.

DMaj7 A#Maj7 EMaj7 B#Maj7 F#Maj7

85
8

A musical staff in treble clef with a key signature of three sharps (F#, C#, G#). The staff contains four measures, each with a whole rest. The measure numbers 85, 86, 87, and 88 are indicated by the bar lines.